

USERGUIDE | MT4+ IPHONE

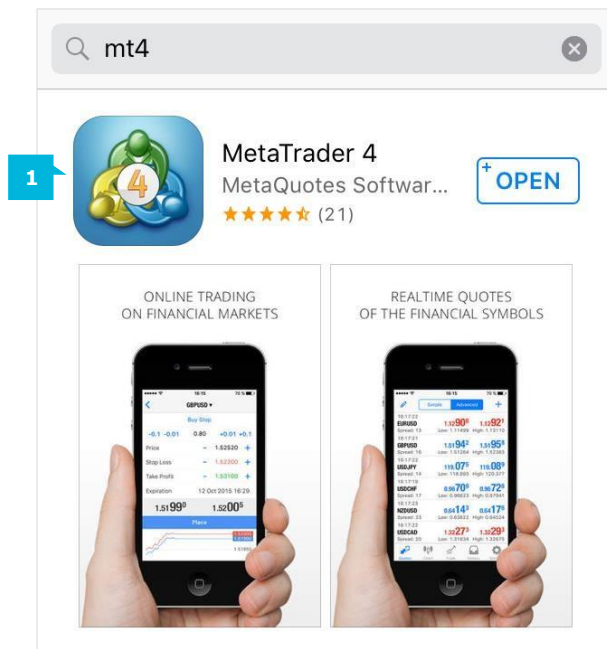


JFD
BROKERS

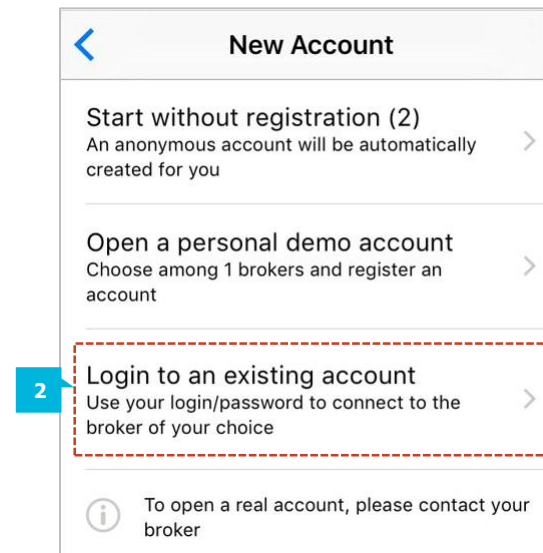
1. INSTALLATION OF THE APP	PAGE 04
2. LOGIN TO YOUR JFD ACCOUNT	PAGE 05
3. QUOTES PAGE	PAGE 07
A. ADDING FINANCIAL INSTRUMENTS TO THE QUOTES LIST	PAGE 07
B. EDITING THE QUOTES LIST	PAGE 09
C. POP-UP WINDOW WITH MANAGING OPTIONS ON THE PAGE QUOTES	PAGE 10
4. CHART PAGE	PAGE 11
A. OPERATIONAL CHART BUTTONS	PAGE 11
B. INDICATORS	PAGE 12
C. CHART SETTINGS	PAGE 14
D. MANAGING OPTIONS ON THE CHART PAGE	PAGE 15

5. TRADING PAGE	PAGE 16
A. HOW TO OPEN A TRADE	PAGE 16
B. ORDER LIST	PAGE 20
C. HOW TO MODIFY / CLOSE AN ORDER	PAGE 21
6. HISTORY PAGE	PAGE 22
7. SETTINGS	PAGE 23
A. ACCOUNTS	PAGE 23
B. CHARTS	PAGE 24
C. JOURNAL	PAGE 24

In the App Store of your iPhone search for MetaTrader 4, [download](#) and install the application (1). The icon of the app will appear on your screen. To open the application, simply click on the icon.



You will be presented with three options you can either start without registration, log in to an existing account or open a free demonstration account. **Please always choose the option: Login to an existing account (2).** You can open a demo account only via the desktop platform of JFD or you can receive login details from our customer support at: support@jfdbrokers.com



NOTE

You cannot open a demo account by JFD via the mobile application. If you sign up for a demo account directly from the mobile platform, you will not receive JFD pricing, leverage, or available instruments. It will not be a JFD demo account, but rather a generic overview of MetaTrader 4 for the smart phone.

Once you have selected **Login to an existing account**, you have to select the server that you wish to connect to. Type in the Search field "JFD" and you will be presented with our three servers to connect to:

- To connect to your Demo account, select the "JFD-Demo" server (1)
- To connect to your Live account, select the "JFD-Live01" or "JFD-Live02" server (2)



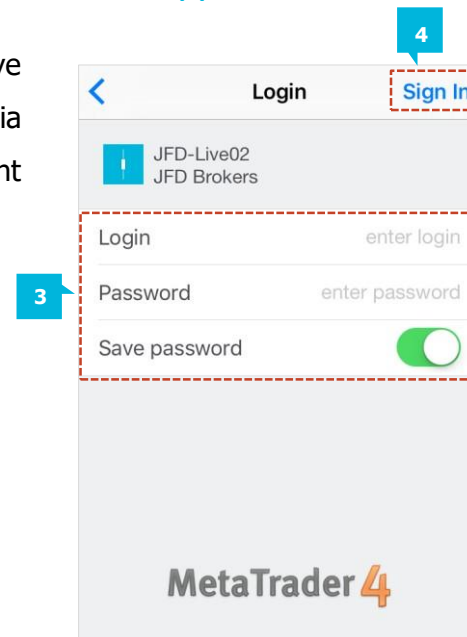
Information about the Live account server you receive via email upon successful account opening.

On the next step you will be directed to the **Login** page.

Please fill in your JFD account number and password (3).

If you turn the box **Save password** to ON, you will save your login credentials, so that you do not have to enter them each time you open the application.

When you have entered your login details, click on the **Sign in** button (4).



Upon successful login, you will enter the **Quotes** page. On the bottom of the screen are located the 5 main Control tabs that you will use to manage your account. These 5 tabs are:

- Quotes (1)
- Chart (2)
- Trade (3)
- History (4)
- Settings (5)

Simple

Advanced

+

EURUSD	1.13173	1.13190
GBPUSD	1.44806	1.44828
USDJPY	109.490	109.510
USDCHF	0.97888	0.97905
NZDUSD	0.67954	0.67991
USDCAD	1.29276	1.29300
AUDUSD	0.73213	0.73231
AUDNZD	1.07685	1.07762
AUDCAD	0.94646	0.94691

Quotes

Chart

Trade

History

Settings

1

2


3

4

5

A. ADDING FINANCIAL INSTRUMENTS TO THE QUOTES LIST

To add more financial instruments to your Quotes list, select the **Plus** button at the top right corner of the page (1).

	Simple	Advanced		1
EURUSD	1.13173	1.13190		
GBPUSD	1.44806	1.44828		
USDJPY	109.490	109.510		
USDCHF	0.97888	0.97905		
NZDUSD	0.67954	0.67991		
USDCAD	1.29276	1.29300		
AUDUSD	0.73213	0.73231		
AUDNZD	1.07685	1.07762		
AUDCAD	0.94646	0.94691		
Quotes	Chart	Trade	History	Settings

Another page named **Add Symbol** will appear. Here you will see instrument's groups listed.

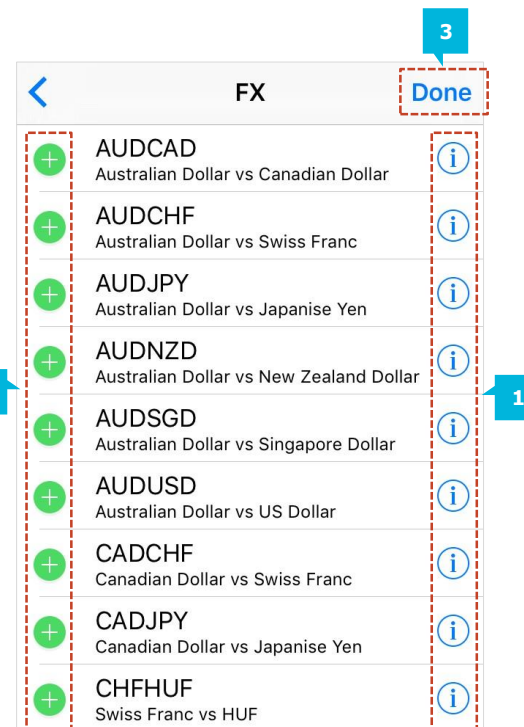
<	Add Symbol
<input type="text" value="Search"/>	
FX	>
Stocks.APEC	>
Bullion.Mini	>
Stocks.China	>
ETF's	>
Stocks.CH	>
Commodities	>
Indices.Futures	>

When you tap on a certain instrument group (for example FX) you will see all the instruments from that group which are offered by JFD.

For every tradable instrument listed, a blue **i**-sign (1) is located on the right and a green **Plus** button (2) on the left. If you select the **i**-sign you can see the symbol information for that particular instrument (spread, digits, stops level, tick size etc.).

By selecting the **Plus** button, the specific instrument will be removed from its group's list and it will be added to the **Quotes** list.

When you have added all the instruments you want to trade, click on the button **Done** (3) located on the top right corner and you will be directed back to the **Quotes** page.



NOTE

We do not recommend opening more than 50 financial instruments in the **Quotes** list as this may slow down the operation of the platform.

B. EDITING THE QUOTES LIST

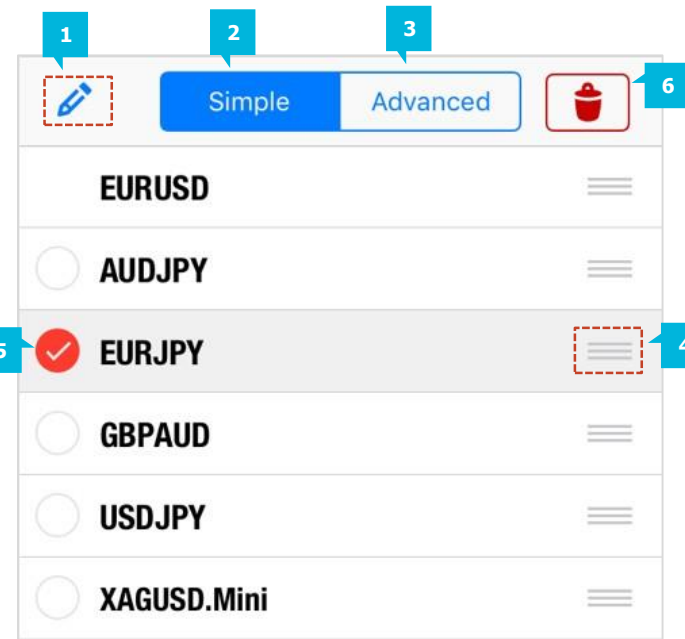
At the top of the **Quotes** page, you will see three more options:

Edit (1), **Simple** (2) and **Advanced** (3).

By selecting the **Edit** button you can rearrange the order in which the instruments appear in the **Quotes** list. Hold your finger on the parallel lines button (4) and move the symbol up or down in the list. Tap on the symbol so that the red tick sign (5) appears. When you click on the **Recycle Bin** (6) button you will delete the symbol from the **Quotes** list. The quotes can be displayed in an **Advanced Mode** or in the default **Simple Mode**.

By selecting the **Advanced Mode** option you can see the spreads (shown in pipettes), the time when the prices were last updated, and High and Low price levels.

08:55:41			
EURUSD#	1.2932³	1.2932³	
Spread: 0	Low: 1.28859	High: 1.29493	
08:55:40			
EURGBP#	0.8054⁰	0.8054⁴	
Spread: 4	Low: 0.80399	High: 0.80628	



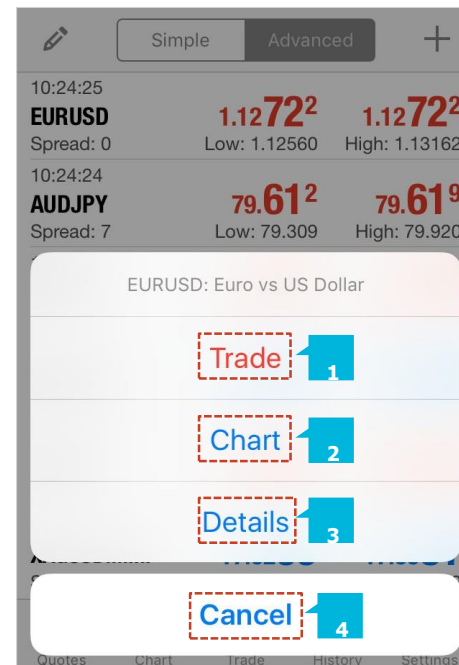
In contrast to the **Advanced Mode**, the **Simple Mode** displays only the ask and bid price, without high and low price levels, spreads and time of updating.

EURAUD	1.24691	1.24741
EURCAD	1.29459	1.29509

C. MANAGING OPTIONS ON THE QUOTES PAGE

When you tap on any of the tradable instruments from the Quotes list, a pop up box will appear with the following 4 options:

- **Trade (1)**– select this option to open a new position and place a trade for the desired instrument
- **Chart (2)**– this option will bring up a chart for the selected instrument
- **Details (3)**– this option will show you all the parameters of the currency pair you have selected
- **Cancel (4)**– you will be directed to the screen with the quotes



A. OPERATIONAL CHART BUTTONS

You can access the **Chart** page by clicking on the **Chart** tab at the bottom of the screen. The **Chart** page of the mobile platform will always show the current instrument you have selected.

You have 9 different time intervals (Periodicity) to choose from (1): **M1** – one minute chart; **M5** – five minutes chart; **M15** – fifteen minutes chart; **M30** – thirty minutes chart; **H1** – one hour chart; **H4** – four hours chart; **D1** – daily chart; **W1** – weekly chart; **MN** – monthly chart.

Furthermore, you also have the possibility to change the chart type from Bar chart, to Candle and Line Chart. To do this, tap one of the respective buttons (2). Depending on how you hold the device (Horizontal or Vertical) the layout of the chart options will be different.

To switch the time frame of the chart, simply select the button with the desired time frame (3) located at the top of the **Chart** page.

You can zoom in or zoom out the chart by holding both your forefinger and your thumb on the screen and pinching to zoom in and out.

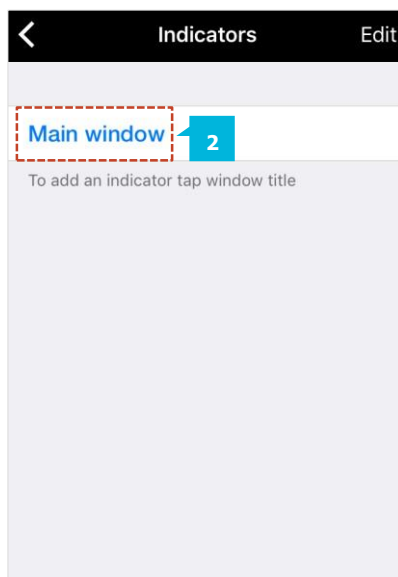


B. INDICATORS

Tap on the **Indicators** icon (1) to open the **Indicators** page.

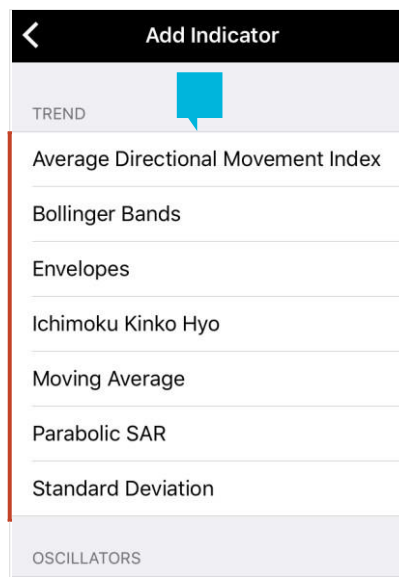


To add an indicator, tap on **Main window** (2) option.

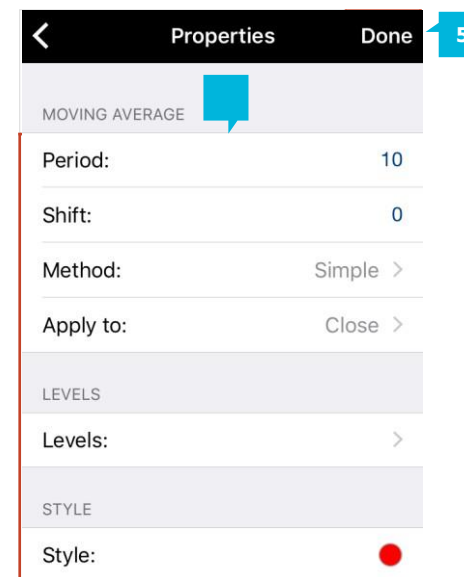


To add another Indicator to your chart open the **Indicators** window again and add another indicator by clicking on the respective option.

A list of all available indicators will appear (3).

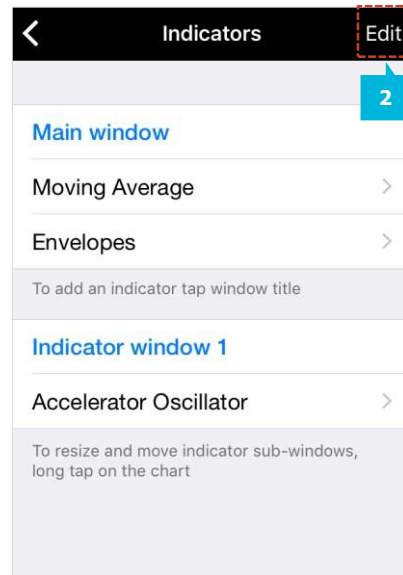


Tap on the desired indicator to see its **Properties** screen (4).

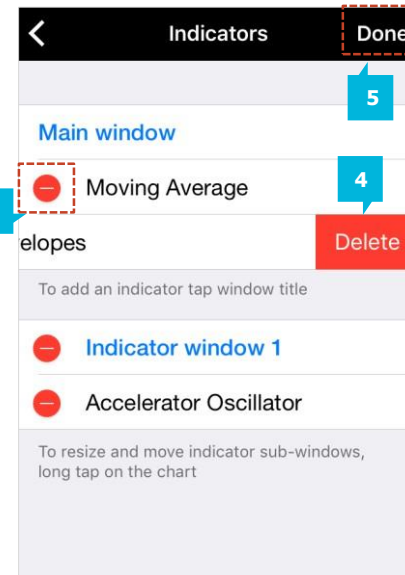


The properties of an Indicator may be altered to your own preference. To confirm your properties and go back to the chart and select **Done** (5).

To remove an Indicator from your Chart, tap on the **Indicators** icon (1) to open again the **Indicators** page. Then tap on the **Edit** button (2).



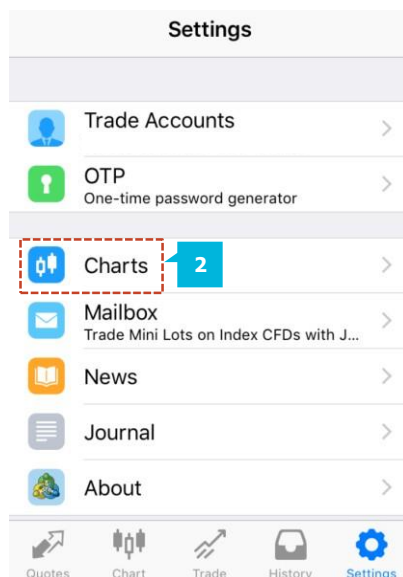
A new page will appear where you have to click on the **Minus** button (3) next to the relevant indicator. The button **Delete** (4) will appear.



Tap on the **Delete** button and then confirm by selecting **Done** (5).

C. CHART SETTINGS

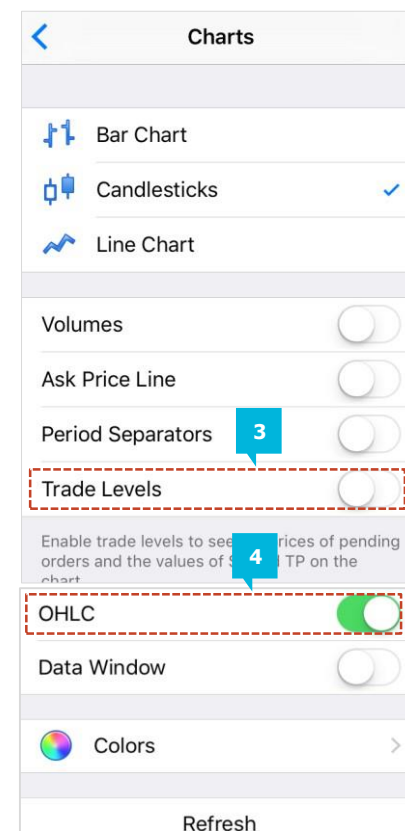
You can open the chart settings window by tapping on the **Settings** button (1) on the bottom right corner of the chart to open the **Settings** page. Tap on Charts option (2).



Here you can turn on and off the Volumes, the Trade levels, the Open/High/Low/Close rates and the Data window.

When **Trade Levels** (3) is enabled, all open positions and pending orders of a symbol are shown on the symbol chart. The trade operations are displayed as lines with signatures at the level, at which they were executed.

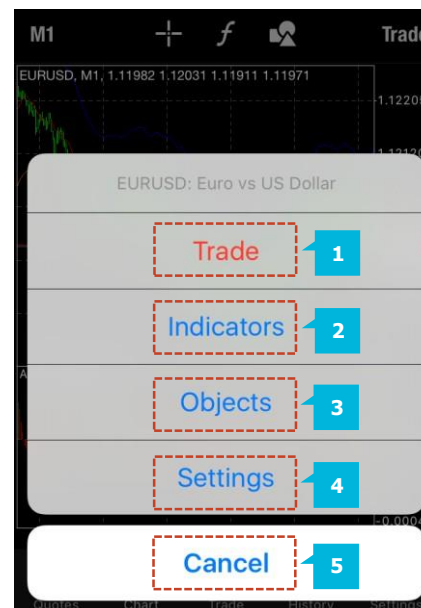
When scrolling a bit down you see the function **OHLC** (4). It displays open, high, low and close price for the relevant chart period. By choosing on or off, you can make visible (on the upper part of the chart) or hide these levels.



D. MANAGING OPTIONS ON THE CHART PAGE

By tapping on the chart, a pop-up box will appear with the following 5 options:

- **Trade (1)** – you can place a trade on the instrument whose chart is open
- **Indicators (2)** – you can manage your indicators
- **Objects (3)** – you can add objects to your chart
- **Settings (4)** – you can manage the chart settings
- **Cancel (5)** – you can close the pop up box

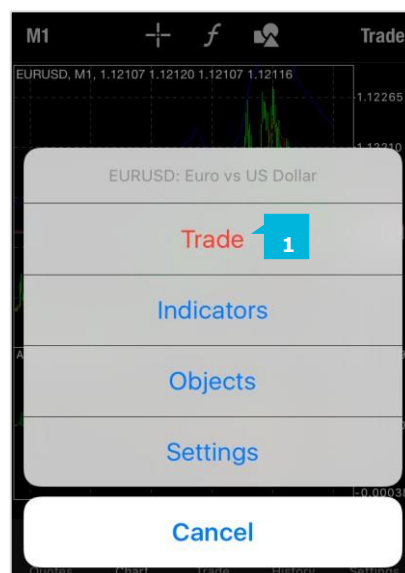
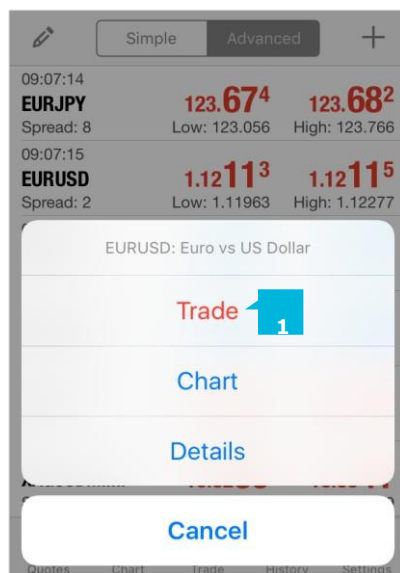


NOTE

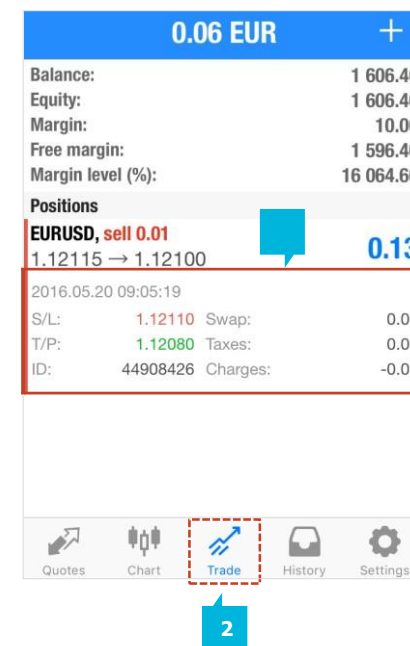
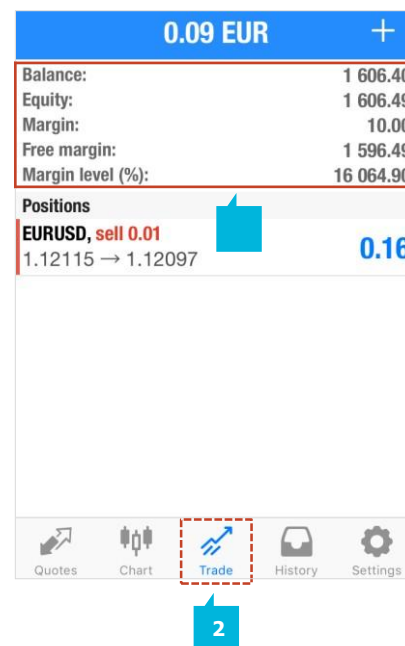
Note: The MT4 app can only open one chart at a time. To change the chart of the CFD or currency pair, simply go back to **Quote**, choose the instrument you want to display, tap on it, and in the action menu tap on **Chart**. Your customized chart characteristics will not be lost in this process.

A. HOW TO OPEN A TRADE

You can open a trade when tapping on a financial instrument in the **Quotes** page or when tapping in the chart of a certain instrument in the **Chart** page and then selecting the option **Trade** from the pop-up menu (1).



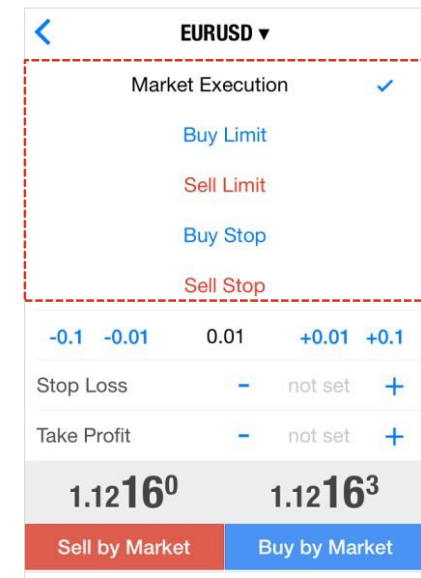
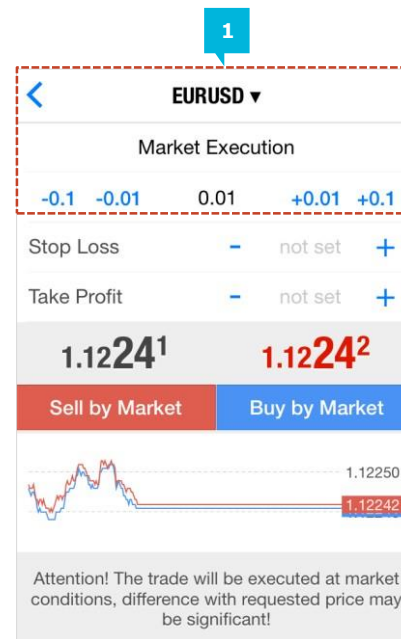
The **Trade** tab (2) can be referred to as Terminal; similar as to the MT4+ Desktop version. Here you can see your account balance, equity, margin, free margin, margin level, as well as all open positions and pending orders (3). When tapping with your finger on a position from the **Positions** list you can see its parameters - Stop loss, Take profit, Swap costs etc. (4).



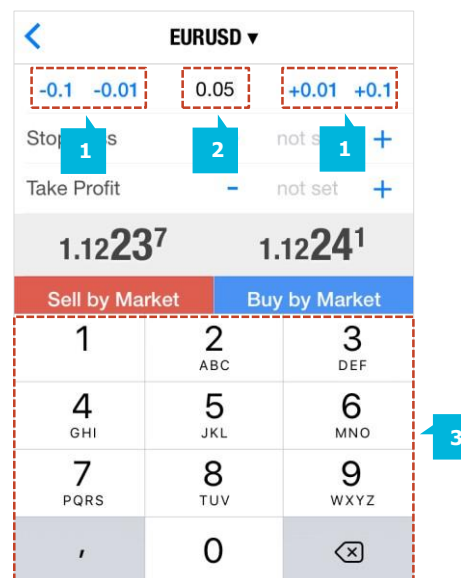
On the **Trading** page you can set the order's parameters for a preferred instrument. You can choose the instrument, the volume and the type of order (market order, or pending order) you wish to place (1).

You have the option of placing the following order types (2):

- **Market Execution:** A buy or sell order that is executed at the market price.
- **Buy limit:** A pending order to open a buy position with an entry price below the current market price.
- **Buy Stop:** A pending order to open a buy position with an entry price above the current market price.
- **Sell Stop:** A pending order to open a sell position with an entry price below the current market price.
- **Sell Limit:** A pending order to open a sell position with an entry price above the current market price. Once you have the correct match, select the volume of the order you wish to place.

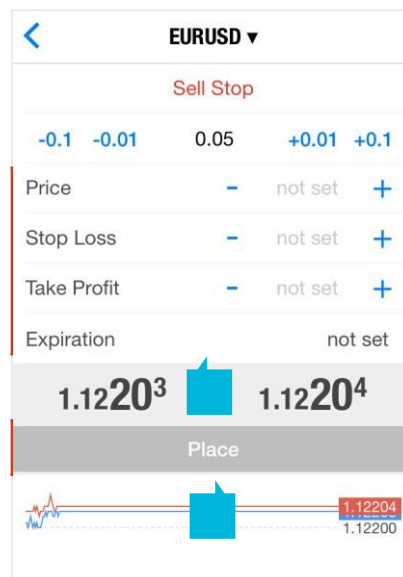
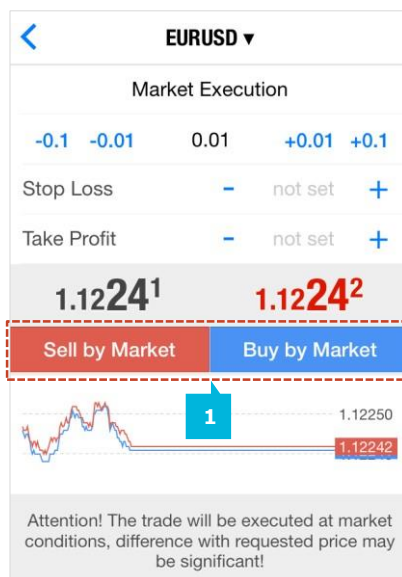


To select the volume of the order you wish to place, either select the numeric buttons (1) next to the volume entry field in the relevant direction, or tap on the volume entry field (2) and an on-screen keyboard (3) will appear which allows you to manually enter the number.

**NOTE**

For some financial instruments (stocks, indices, commodities) the minimum order volume is 1. Please consider the instrument you are trading and enter an acceptable quantity for the relevant instrument.

If you want to place a Market Execution order that will be executed immediately at the current market price you will be presented with a page displaying the current Bid and Ask prices. To place a trade, choose the instrument you want to trade, the type of order you want to place and click on either the **Sell by Market** or **Buy by Market** button (1). If you have selected one of the four Pending Order types on the next page (2) that will appear you can set the entry price, the stop loss and the take profit levels.



To enter an execution price, select the **Price** entry field (2). An on-screen keyboard will appear so that you can manually enter the price at which you want your order to be executed. To enter a **Stop Loss** and **Take Profit**, select the relevant fields (2) and the on-screen keyboard will appear again where you will then be able to enter the values you desire. To move your price up or down by one pip select the **Plus** or **Minus** button (2). To add an Expiration for a Pending Order, select the field **Expirations** (2). The default setting is **GTC** (Good till Cancelled) for currency trading. For the other financial instruments, the pending orders expiration depends on the requirements of the exchanges. Once all trading parameters are set, select the **Place** button (3) and your Pending Order will be placed.

NOTE

Please note that the function Expiration is disabled on the Live Server mobile application. You cannot place live orders with expiry date.







NOTE







If the entry price, the SL or the TP you have entered is not correct, the button Place will remain inactive (in grey).

B. ORDER LIST

On the **Trade** page, below the parameters of your account in the section **Positions** (1) you will see a list of all your open positions. When you select a position, a more detailed overview (2) of that particular trade will be presented to you. This includes Stop Loss and Take Profit levels, the date and time of execution, the ID number for the trade, along with any other additional charges such as swap, taxes or charges for the position.

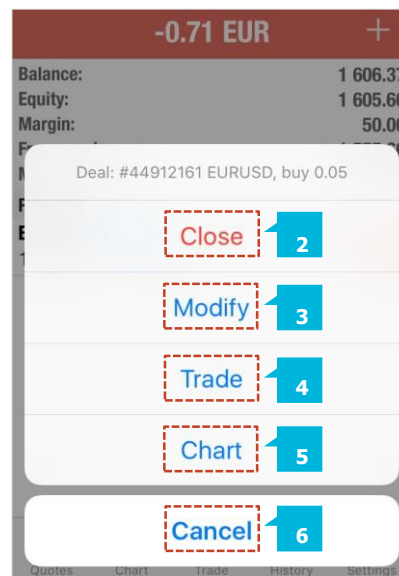
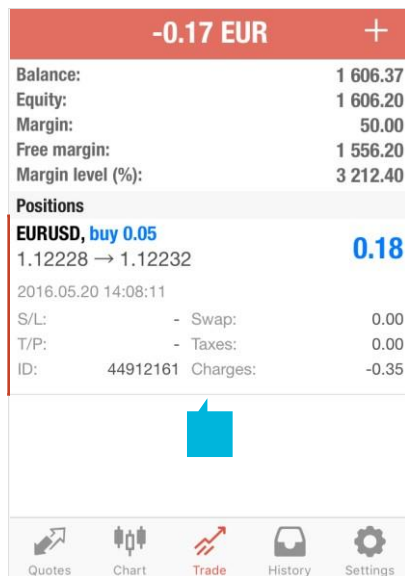
If you have any pending orders, they will be shown in the **Orders** section of the page, which will appear below the Positions section. Here you will see the instrument, the type of pending order, the volume, desired entry price, and then the current spot price. To view all the parameters of the pending order, please tap on it.

0.09 EUR +	
Balance:	1 606.40
Equity:	1 606.49
Margin:	10.00
Free margin:	1 596.49
Margin level (%):	16 064.90
Positions	
EURUSD, sell 0.01	
1.12115 → 1.12097	0.16
	
<div>      </div> <div> Quotes Chart Trade History Settings </div>	

0.06 EUR +	
Balance:	1 606.40
Equity:	1 606.46
Margin:	10.00
Free margin:	1 596.46
Margin level (%):	16 064.60
Positions	
EURUSD, sell 0.01	
1.12115 → 1.12100	0.13
	
2016.05.20 09:05:19	
S/L: 1.12110	Swap: 0.00
T/P: 1.12080	Taxes: 0.00
ID: 44908426	Charges: -0.07
<div>      </div> <div> Quotes Chart Trade History Settings </div>	

C. HOW TO MODIFY / CLOSE AN ORDER

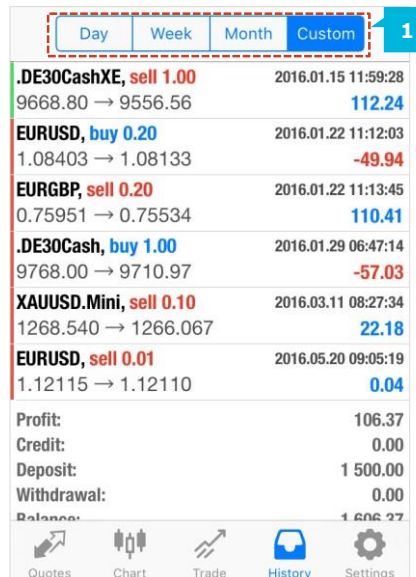
To close an open position or modify / add a stop loss or take profit, tap on the order you want to close. The **Trade Info Box (1)** will pop open below the trade, containing all information about the individual position. Inside this box, tap and hold your finger for a few seconds until the options menu opens. At this point you will be able to modify or close open positions.



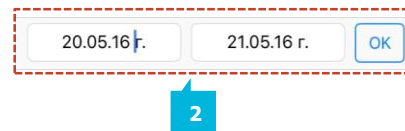
The pop-up menu contains the following options:

- **Close (2)** - to close your order at the market price
- **Modify (3)** – to add or modify your stop loss and take profit
- **Trade (4)** - brings you back to the trade tab to place a new order
- **Chart (5)** – brings you back to the chart for the instrument you are trading
- **Cancel (6)** – closes the pop up box

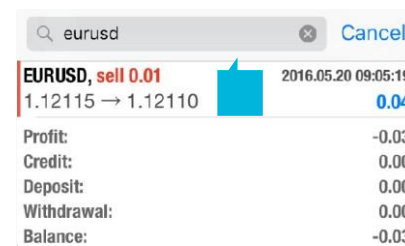
The **History** page enables you to view your trading history. To choose the time period for your history report, select the preferred option from the menu bar at the top of the History page (1). Choose from one of the following options: **Day**, **Week**, **Month** or **Custom**. You can view all trades that were closed out for the selected period as well as an overview of the profit/loss, withdrawals, deposits, balance and credit.



The option **Custom** enables you to select the time period of your choice (2). Simply enter the dates into the field at the top of the page.

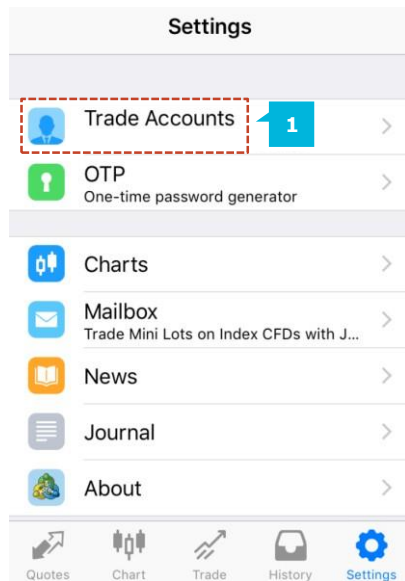


In the mobile app you have the possibility to filter all the trades based on their symbol. Simply type the instrument you are looking for in the **Search** field (3), e.g. EURUSD, and the App will list all the trades you have entered under the search criteria.

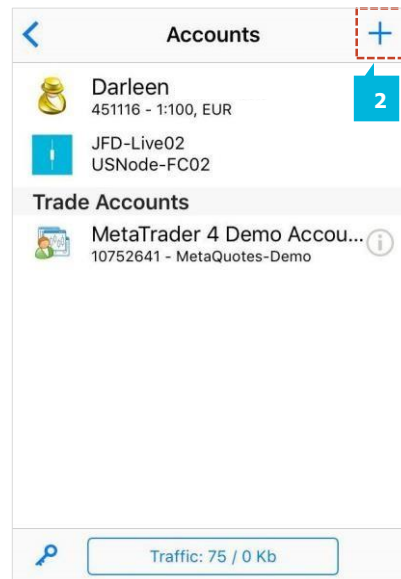


A. ACCOUNTS

On the **Settings** page you can access the **Trade Accounts** section by tapping on the respective option (1) where you can see all the accounts that you have logged into.



By selecting the **Plus** button (2) at the top right corner of the screen, you will be brought back to the **Login** page, where you can login to a new account.



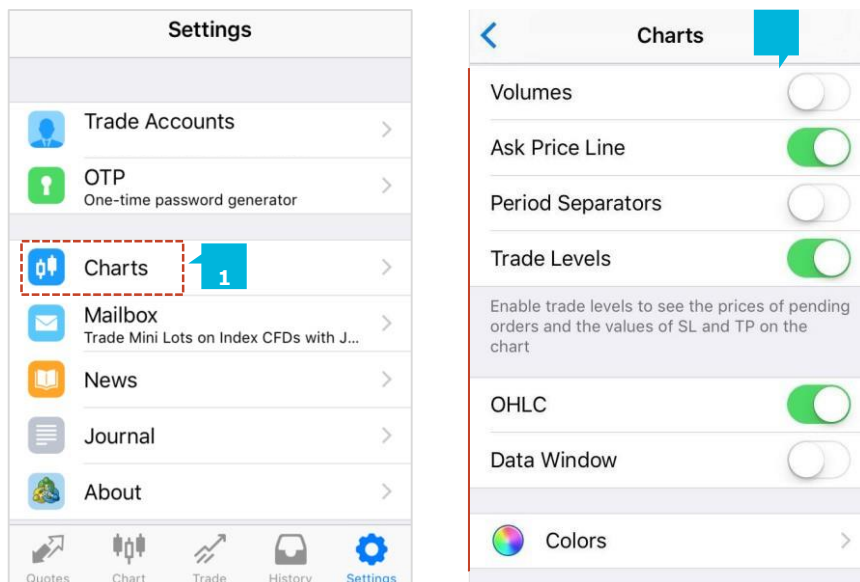
On the **Accounts** page you can see the parameters of the current connection:

- **Access point**—the name of the access point, through which the terminal is currently connected to a server
- **Server**—the name of the server, to which the mobile terminal is currently connected
- **Traffic** — amount of incoming and outgoing traffic for the current session

To delete an account, swipe your finger from right to left on the account and a red **Delete** button will pop up.

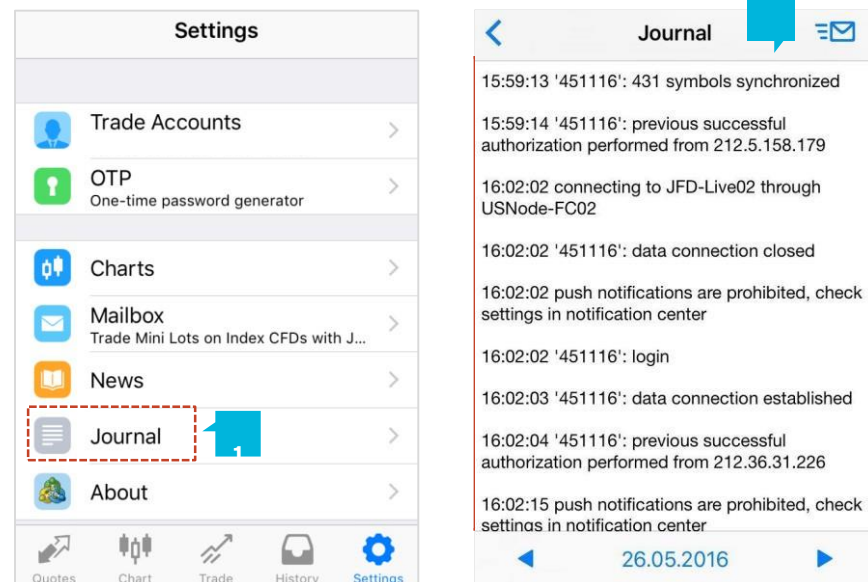
B. CHARTS

By selecting the **Charts** section (1) you will be able to customize your chart (2) as described in chapter 4C.



C. JOURNAL

By selecting the **Journal** section (1) you can see the trade logs (2). The log files contain records of all actions which are done through the application. You can page through the dates by means of the arrows at the bottom of the page.



CONTACT US

Kakos Premier Tower
Kyrillou Loukareos 70
4156 Limassol, Cyprus
Tel: +357 25878530
Fax: +357 25763540

SUPPORT

Helpdesk Phone: +49 40 87408688

Helpdesk E-mail: support@jfdbrokers.com

Live chat: [Chat now!](#)

Web: www.jfdbrokers.com

JFD is a leading Group of Companies offering financial and investment services and activities. "JFD Brokers" is a brand name and registered trademark owned and used by the JFD Group of Companies, which includes: JFD Group Ltd, a company with registration number HE 282265, authorized and regulated by the Cyprus Securities and Exchange Commission - CySEC (Licence number: 150/11) and JFD Overseas Ltd which is authorized and regulated by the Vanuatu Financial Services Commission (License number 17933).

